

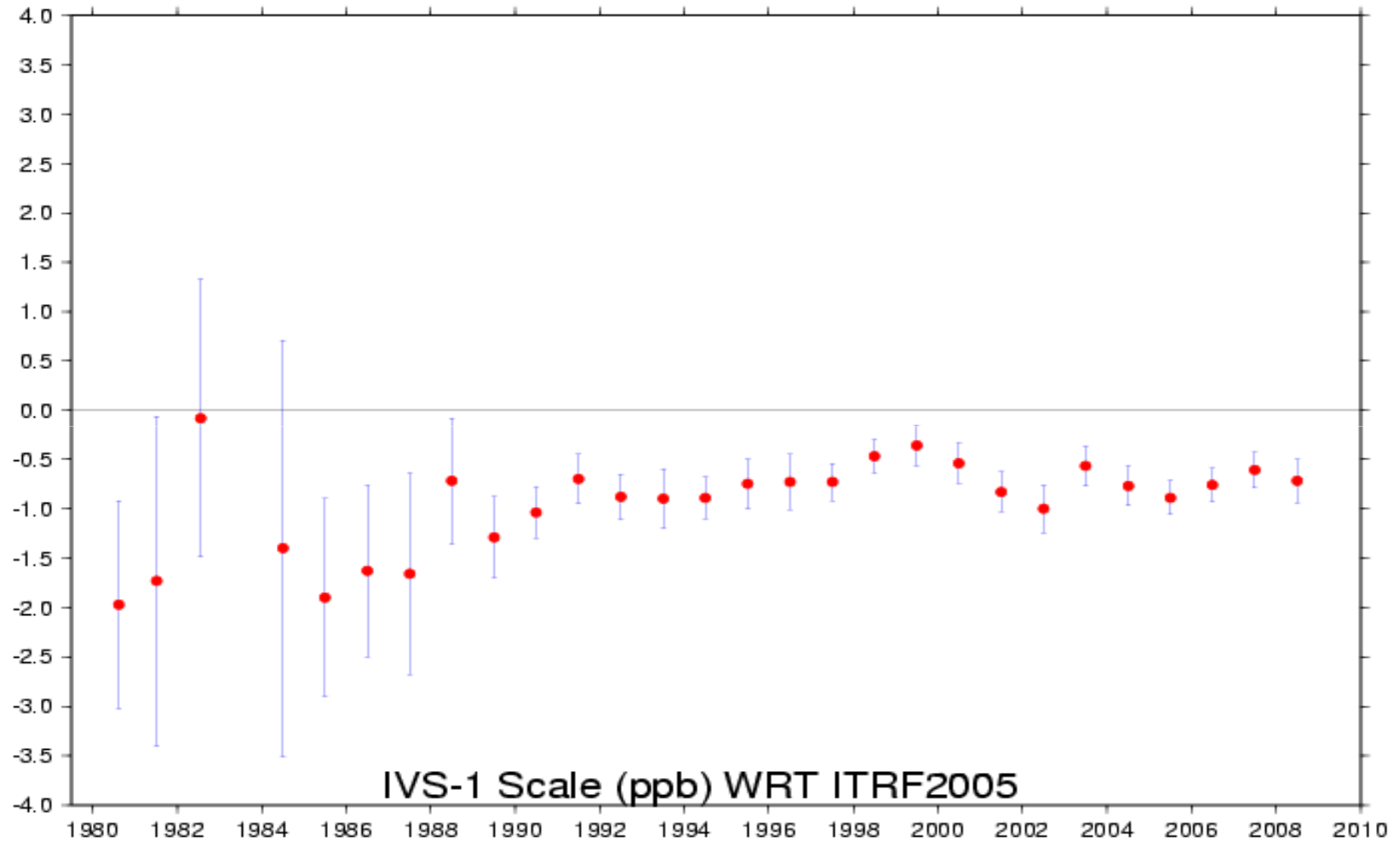
Perspectives on the IDS Combination and ITRF2008

Zuheir Altamimi

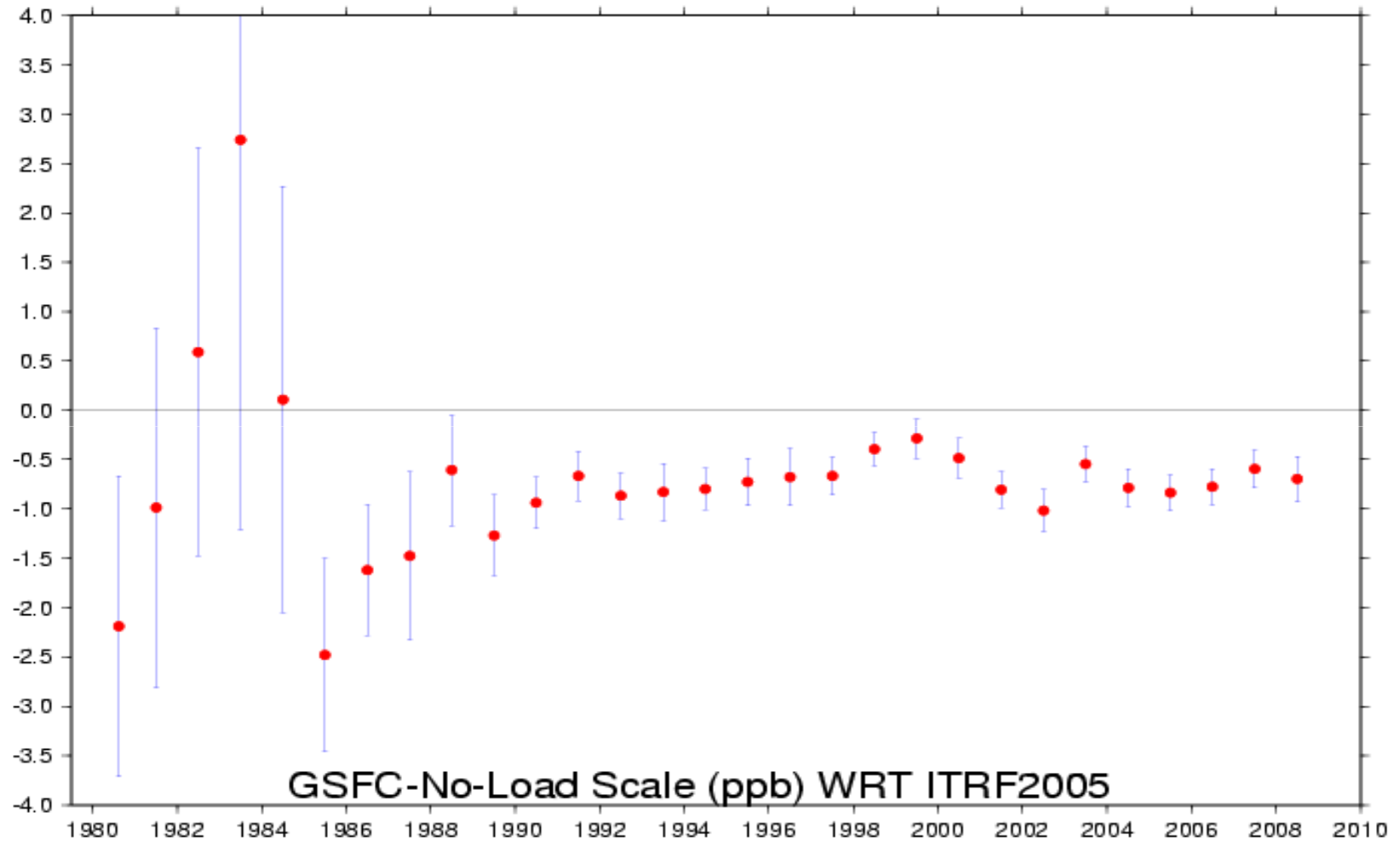
Status of technique contributions

- **IDS:** No comment
- **ILRS:** still waiting
- **IVS:** preliminary solution
- **IGS:** submitted Feb12 (2000.0 – 2009.0)

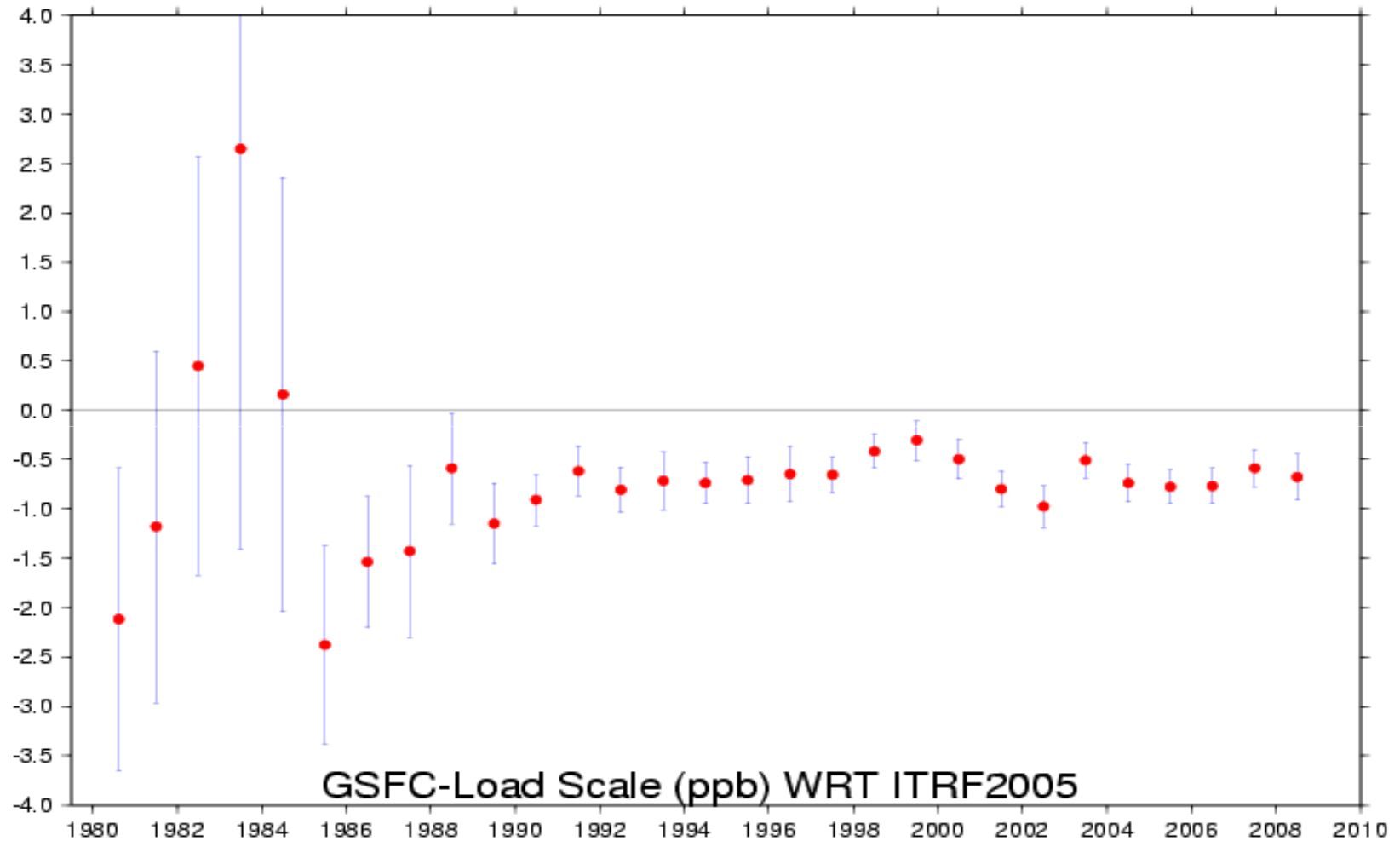
IVS-1 Annual Scale wrt ITRF2005



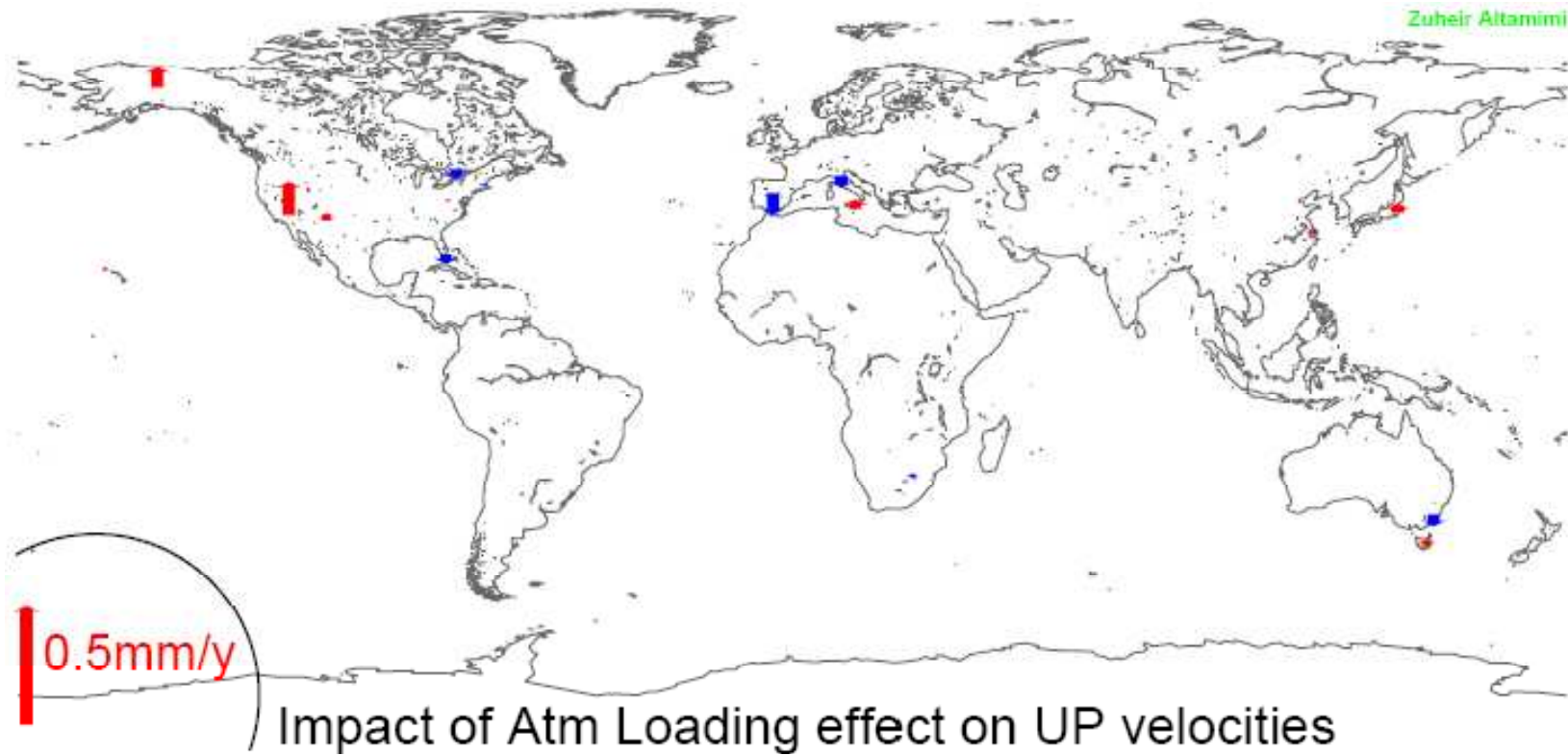
GSFC-No-Load Annual Scale wrt ITRF2005



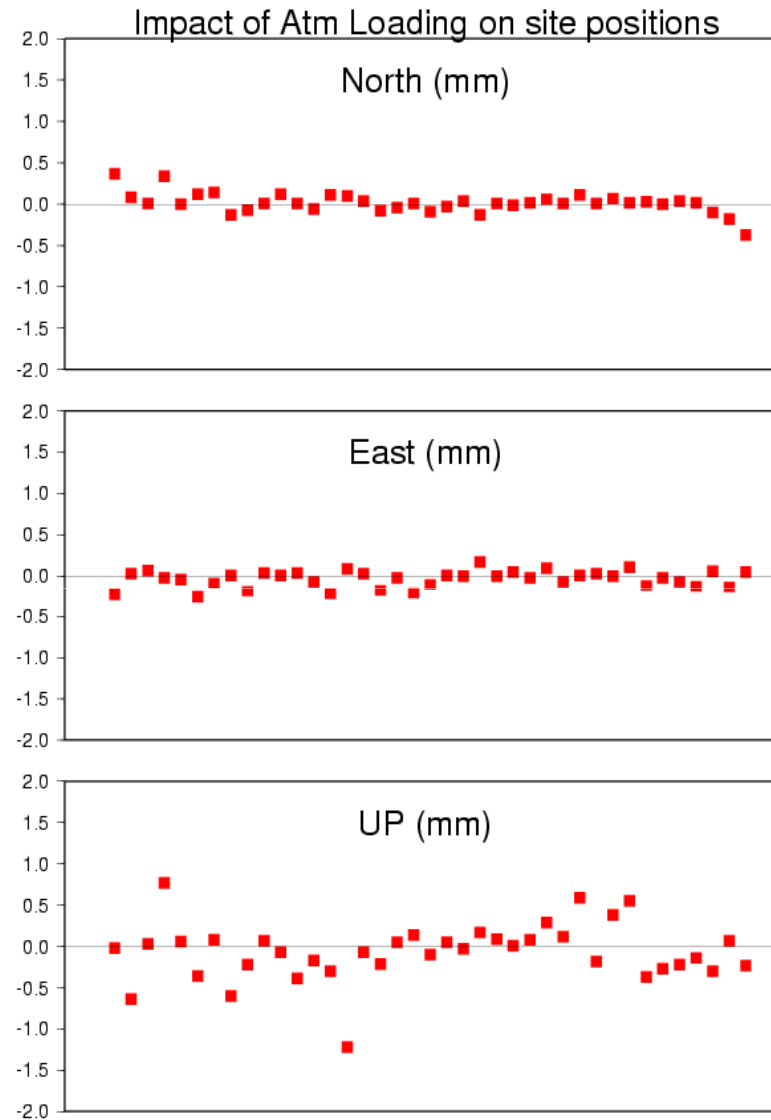
GSFC-Load Annual Scale wrt ITRF2005



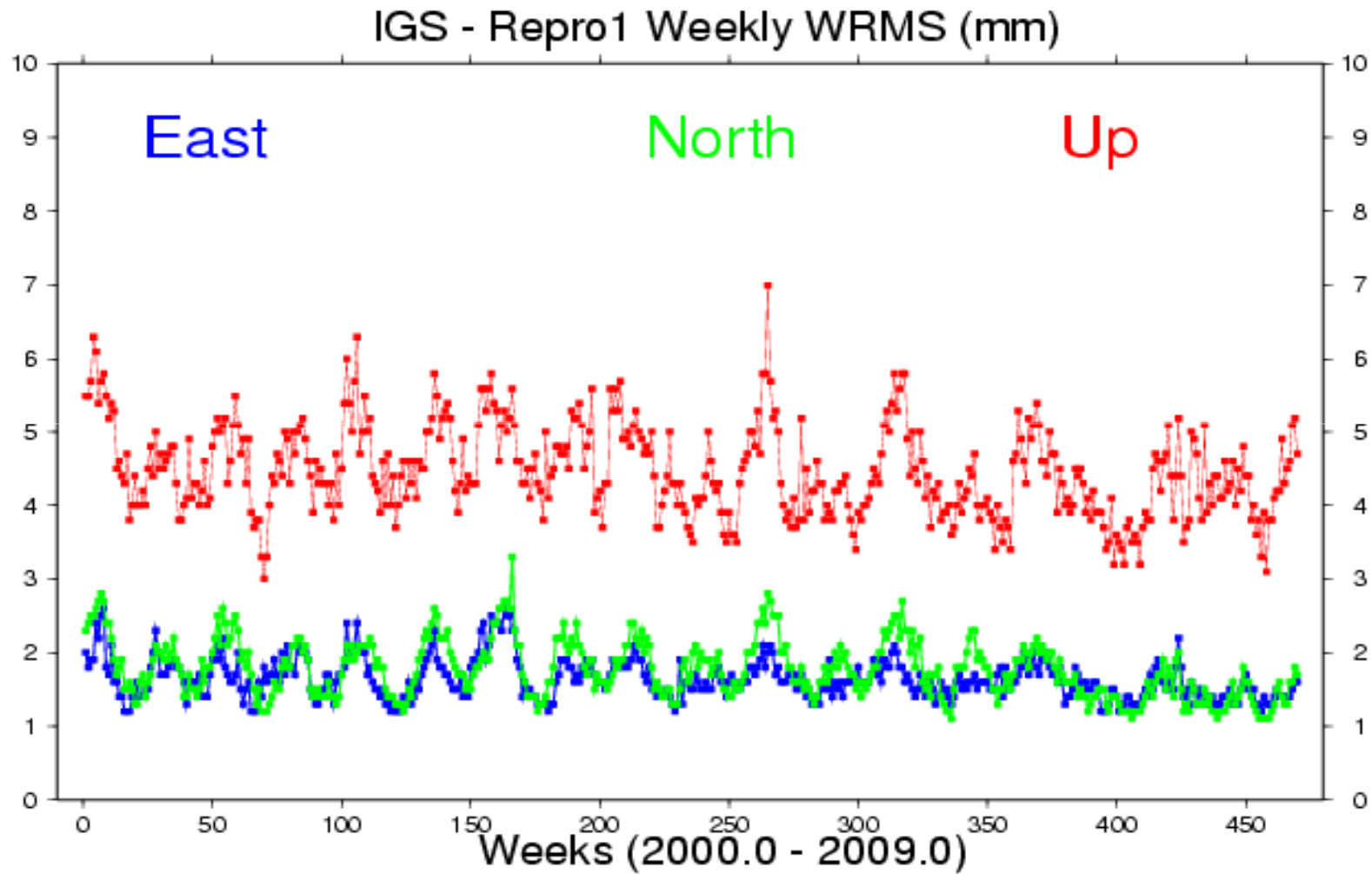
Impact of Atm Loading on Site UP Velocities



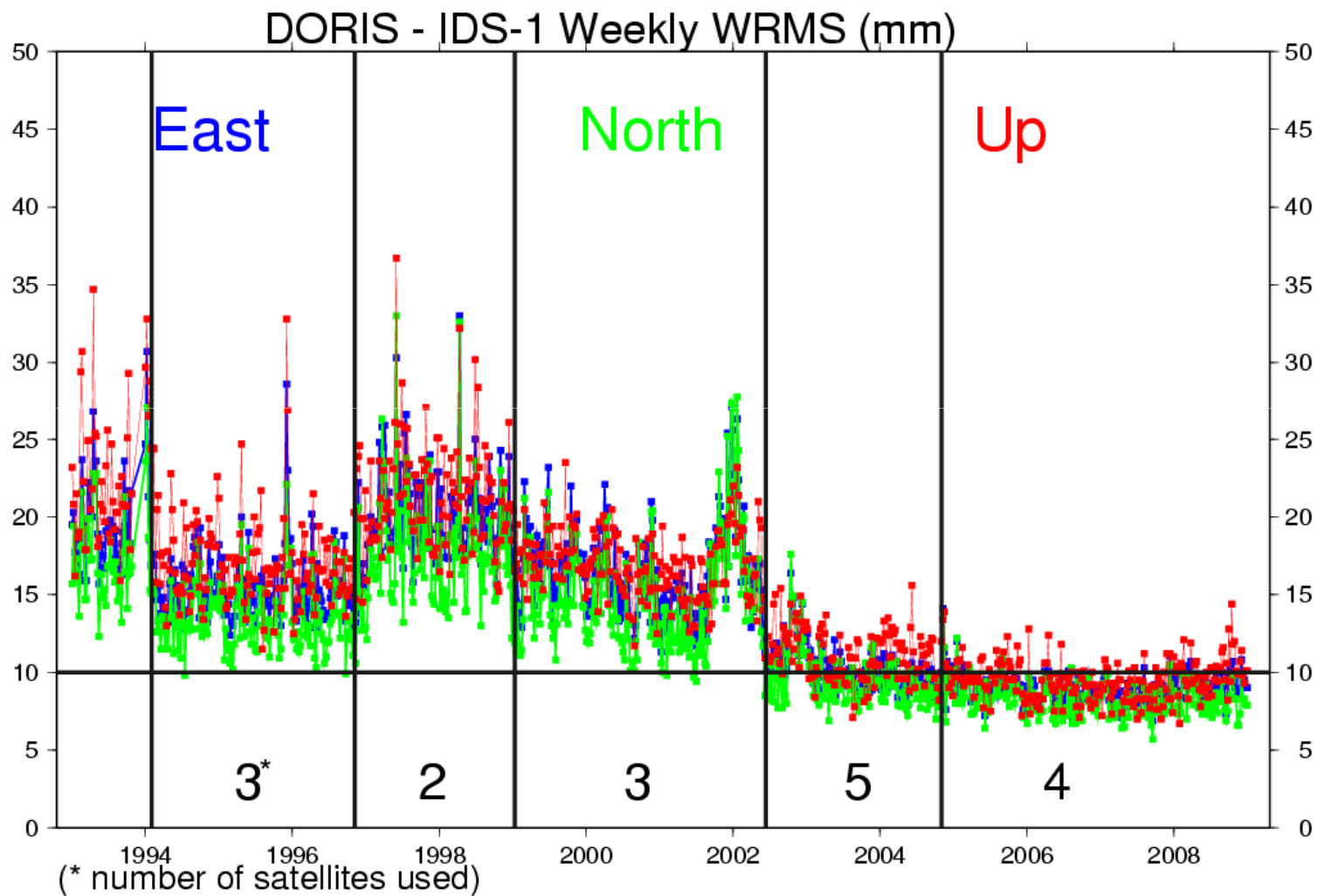
Impact of Atm Loading on Site Positions



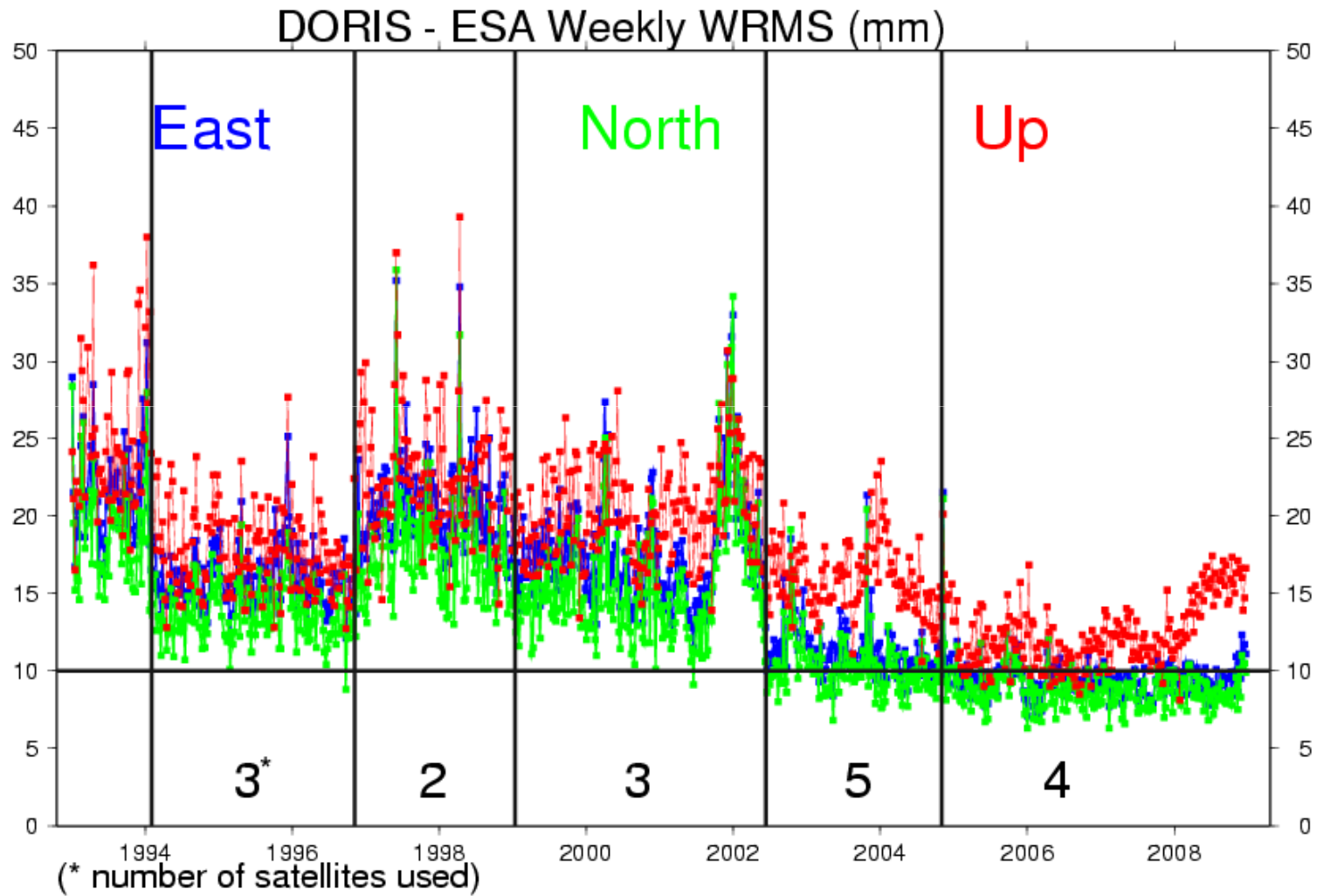
IGS - Repro1 WRMS



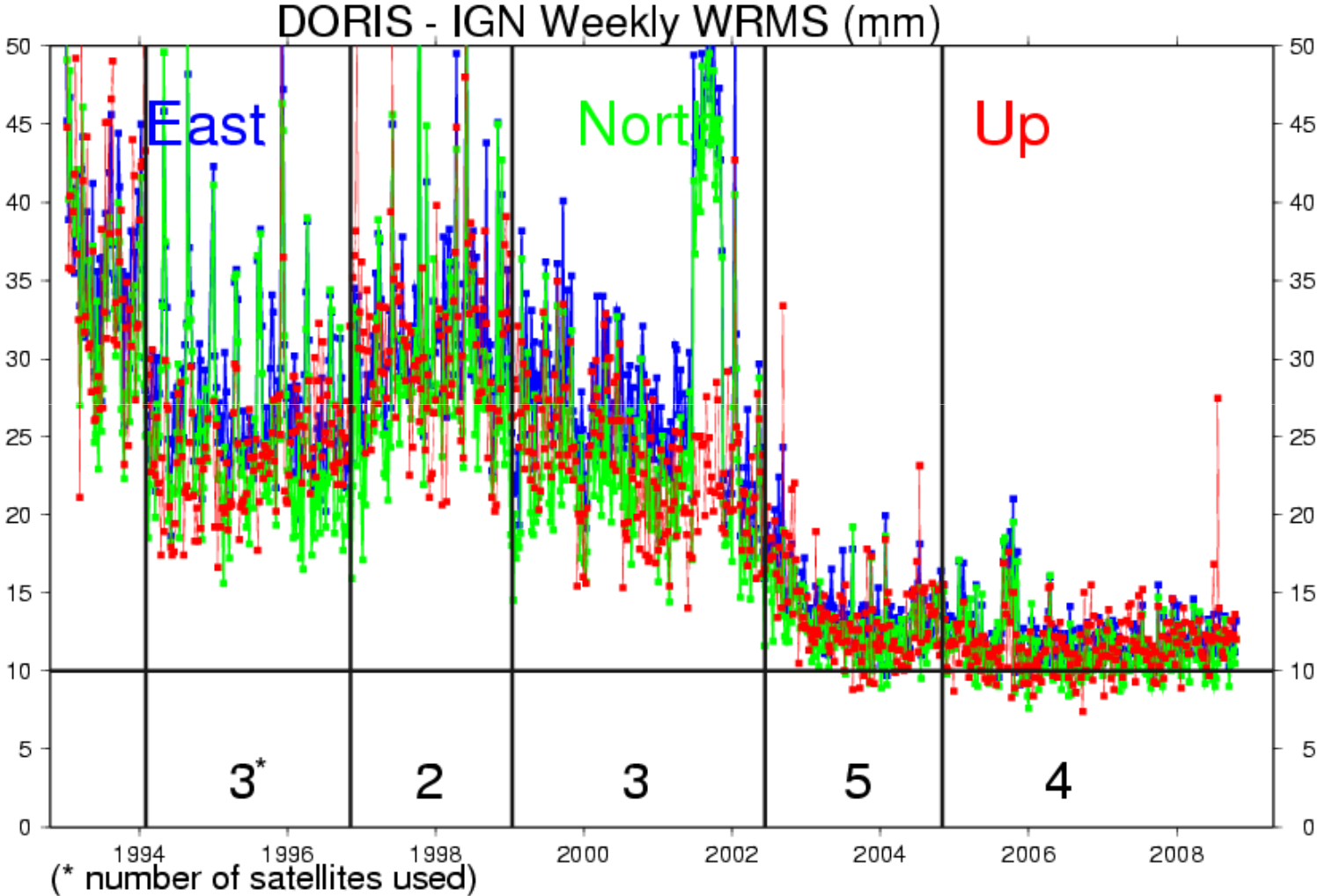
IDS-1 WRMS



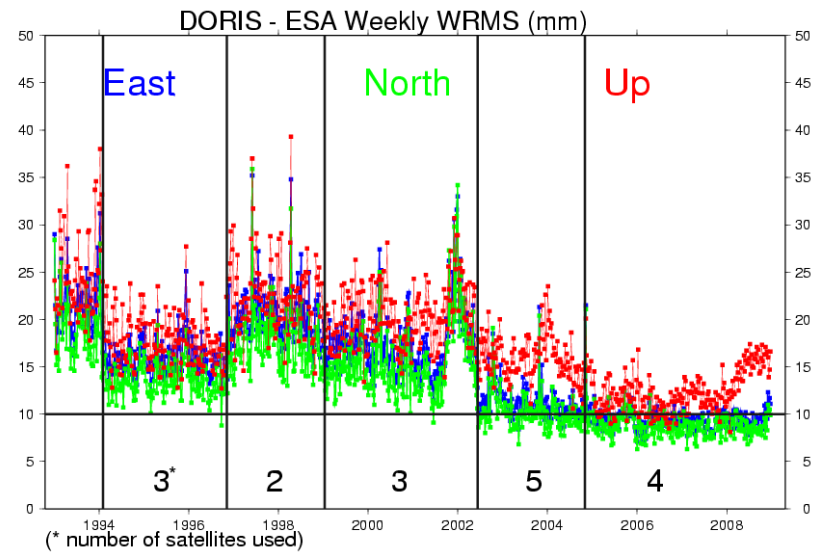
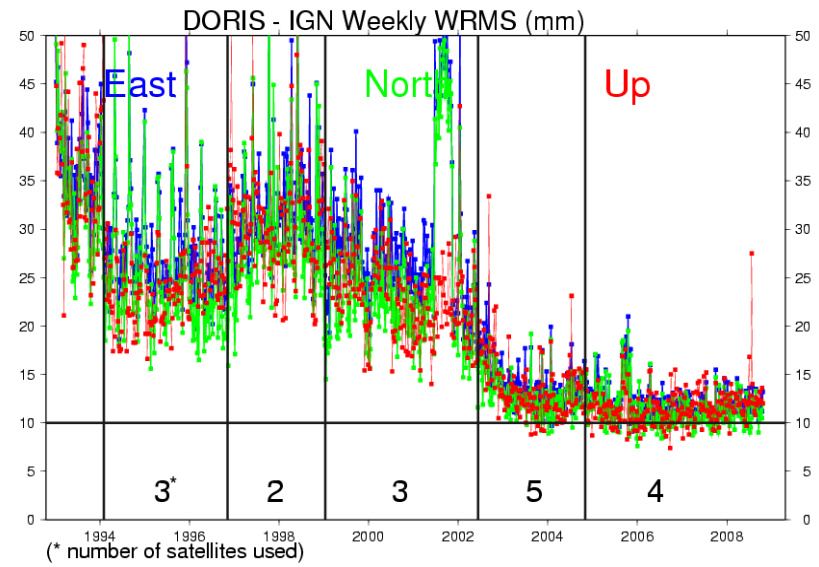
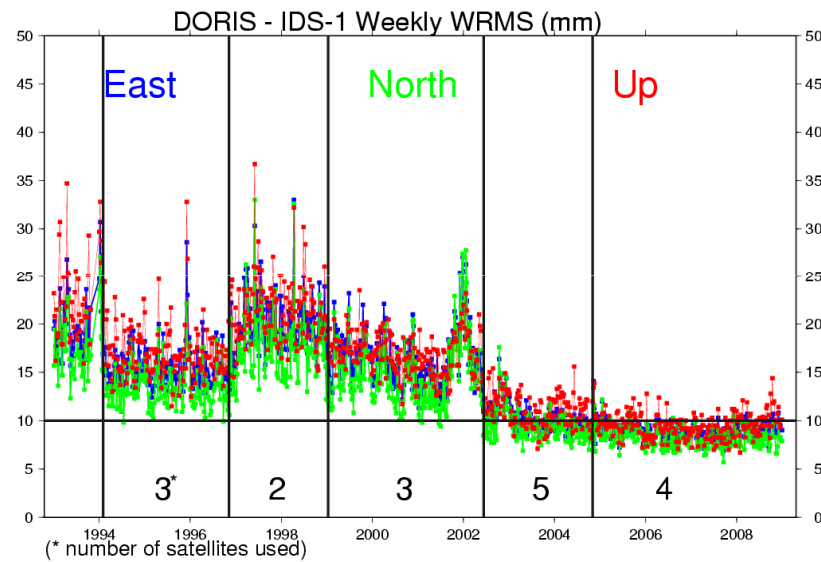
ESA WRMS



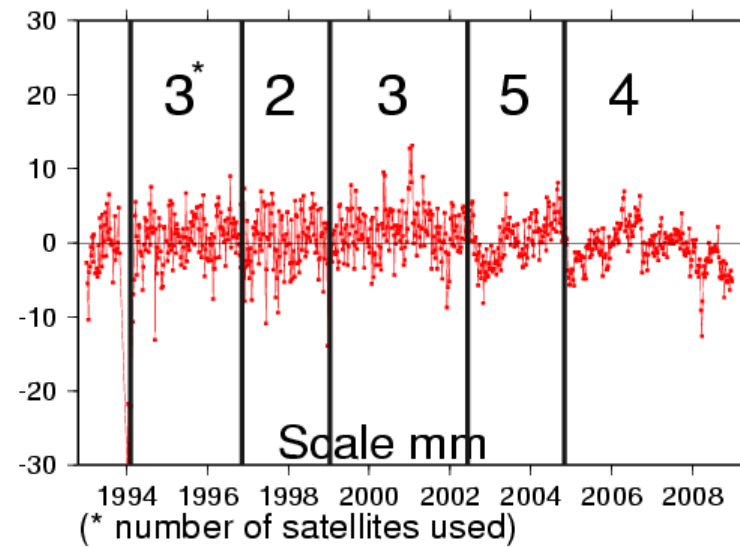
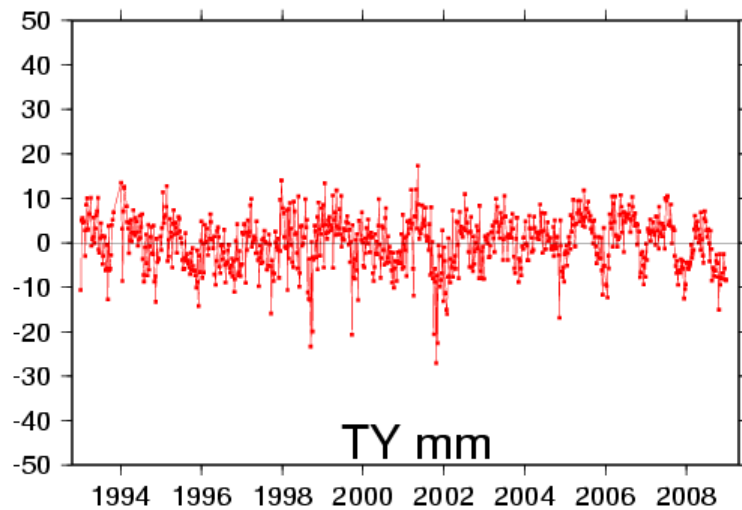
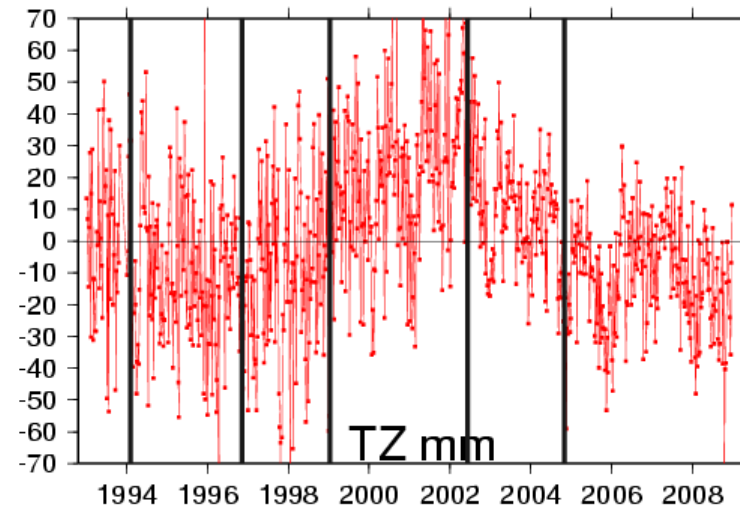
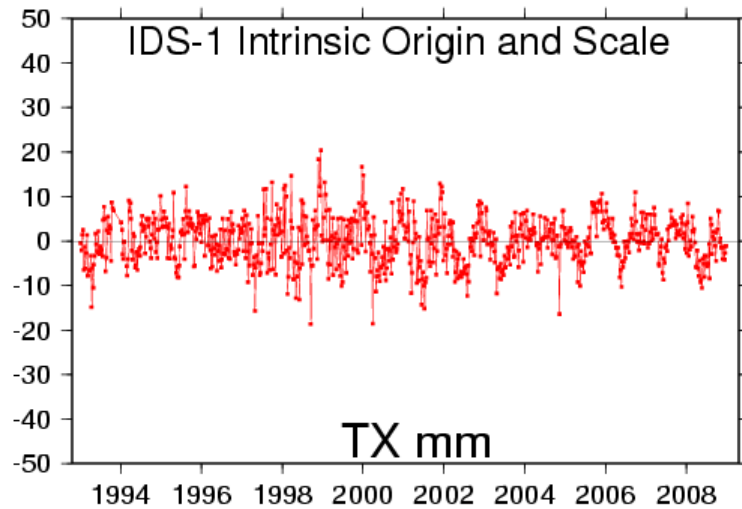
IGN WRMS



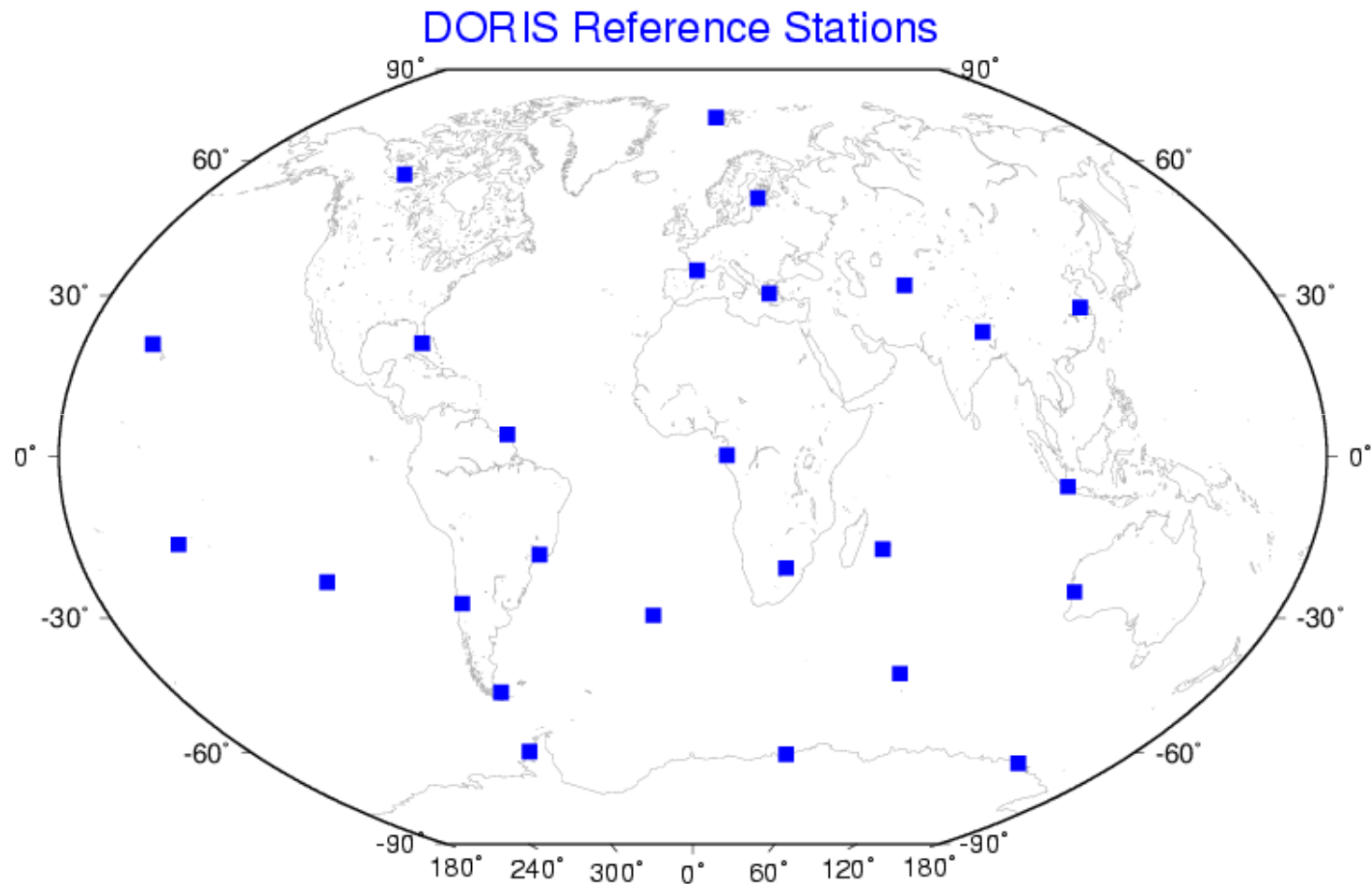
IDS-1, IGN and ESA WRMS



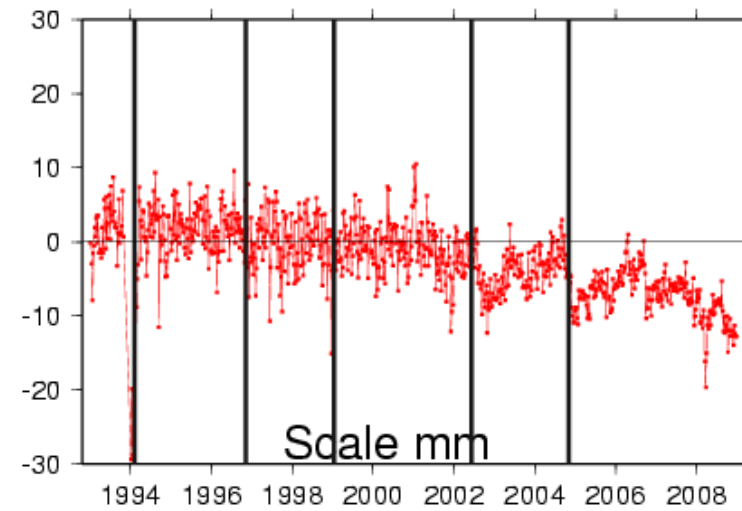
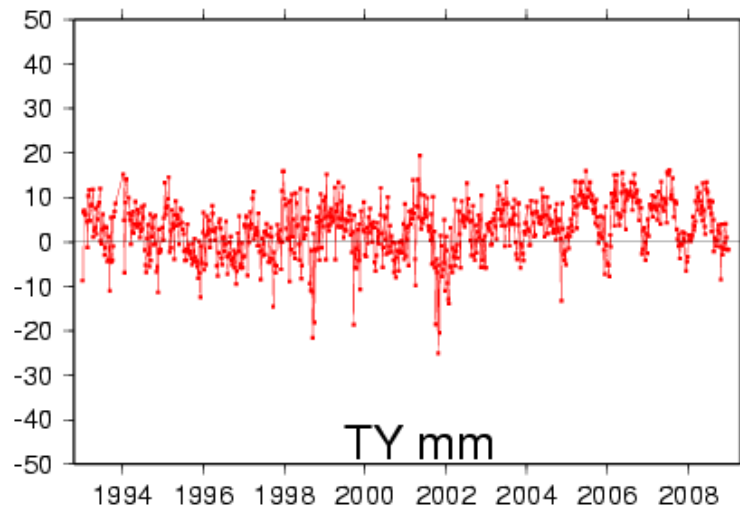
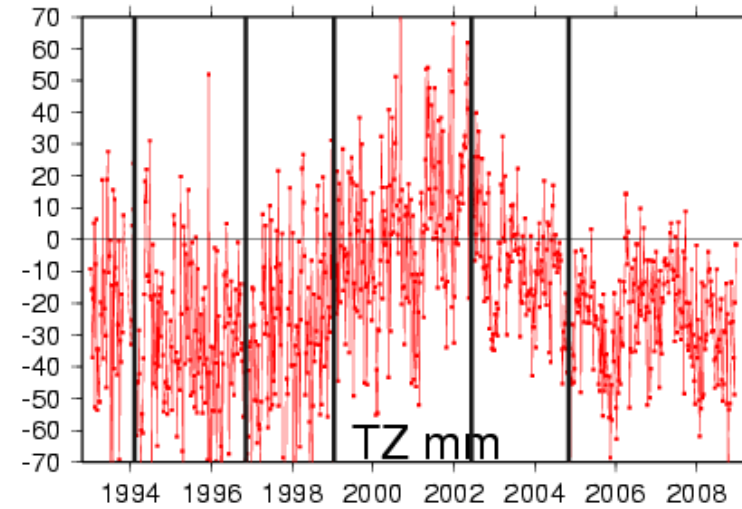
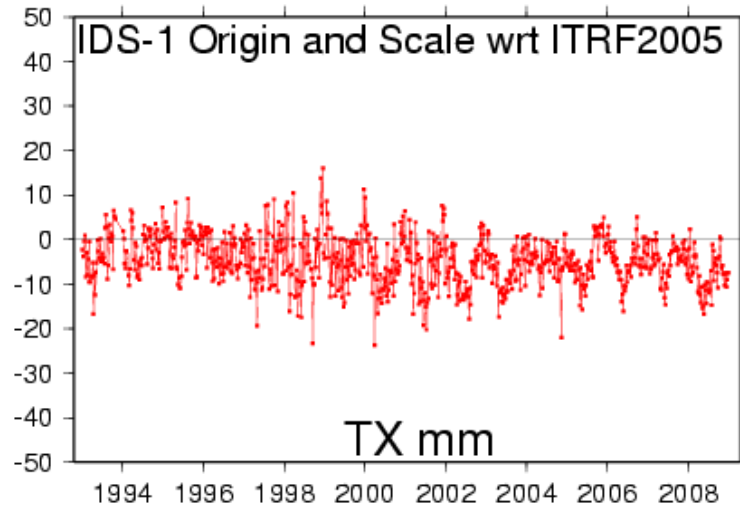
IDS-1 Intrinsic Origin and Scale



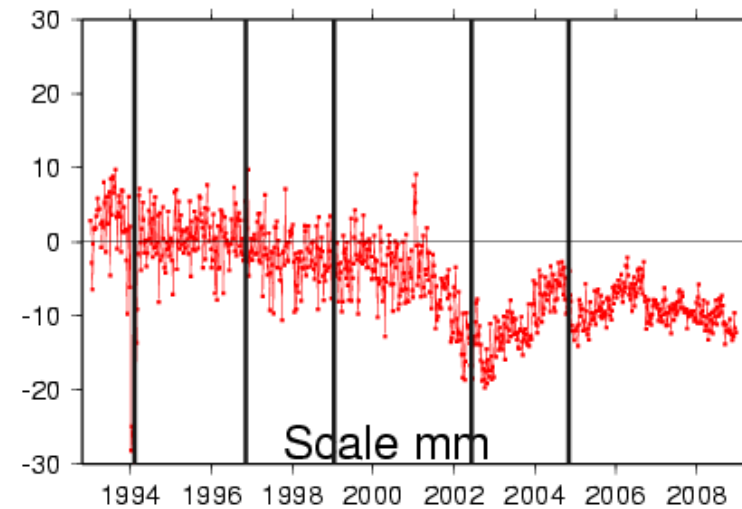
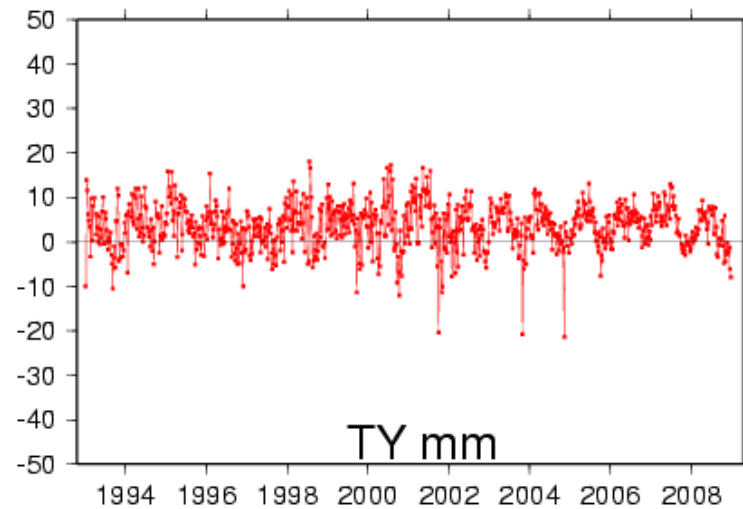
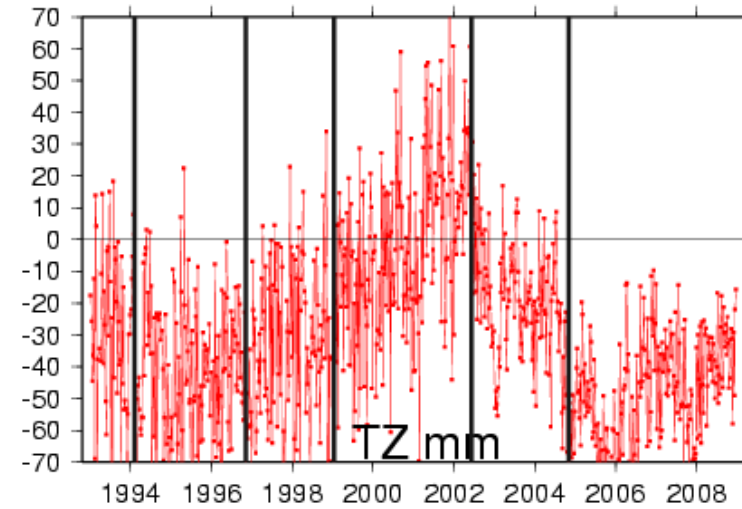
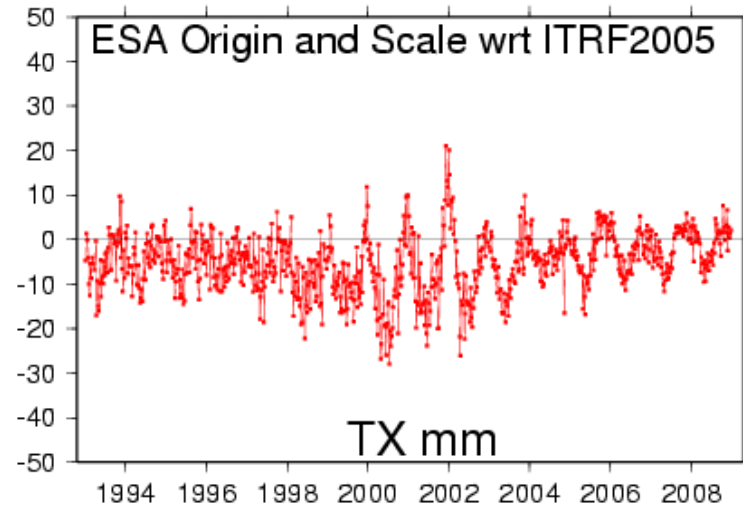
DORIS RF Stations



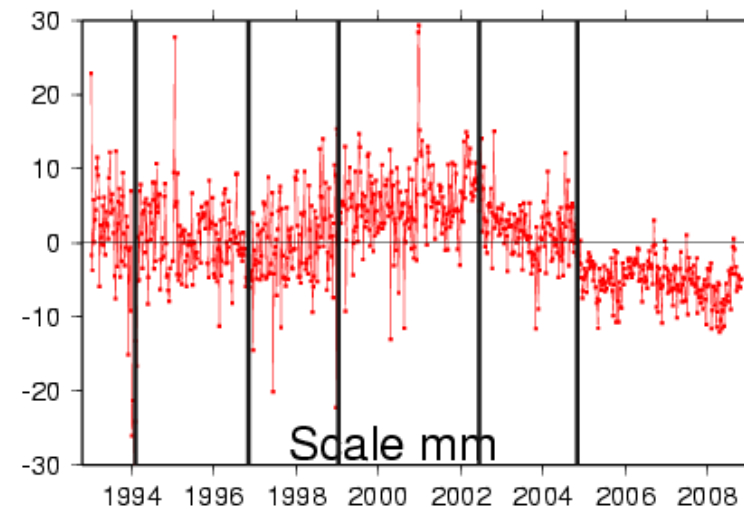
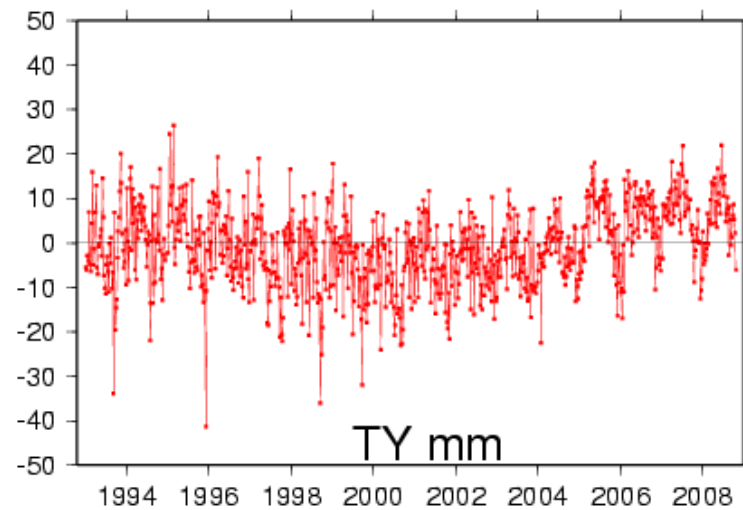
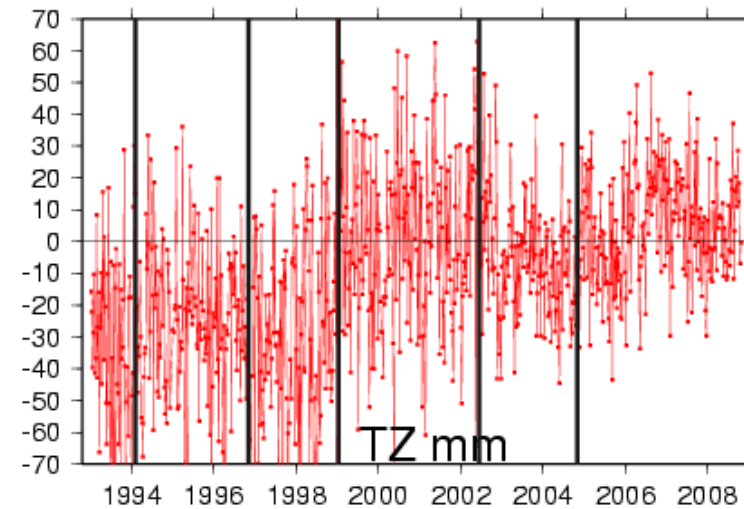
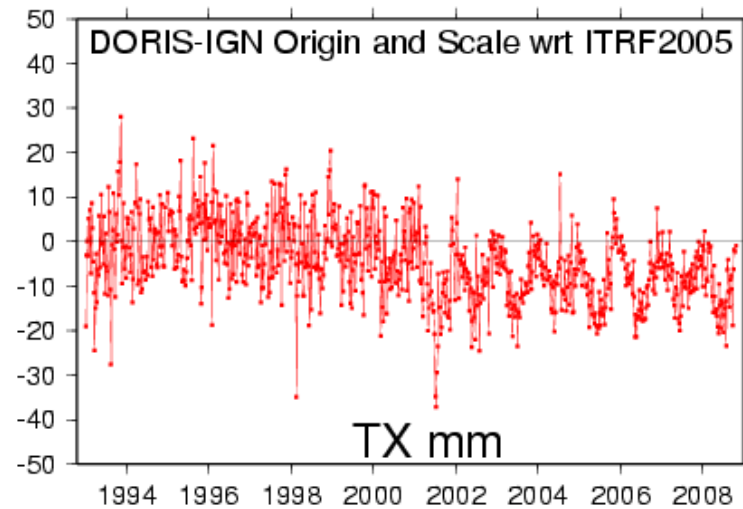
IDS-1 Origin and Scale WRT ITRF2005



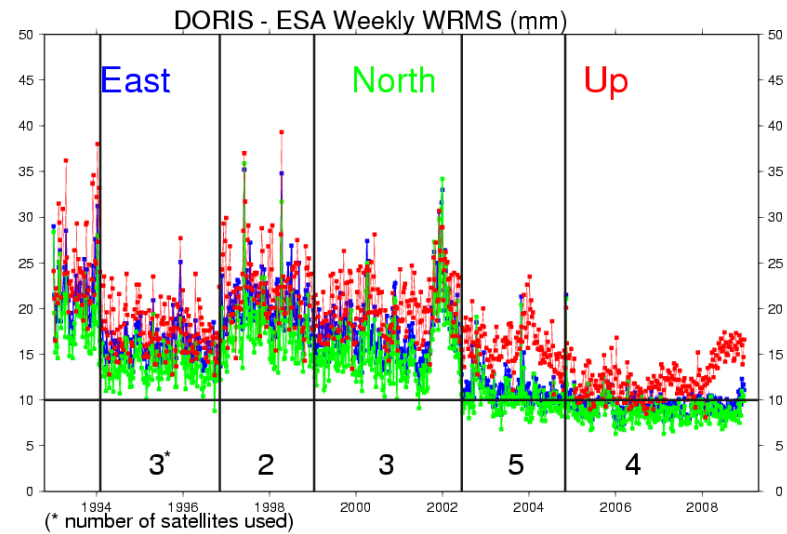
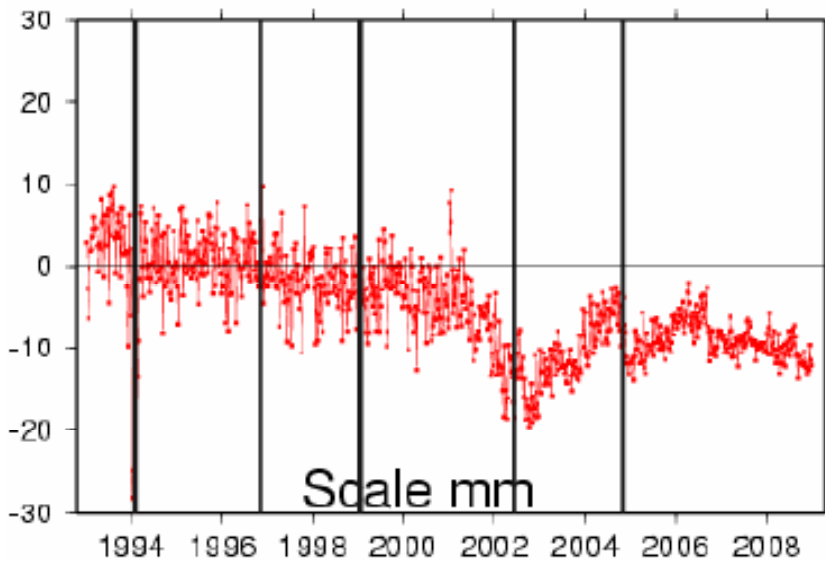
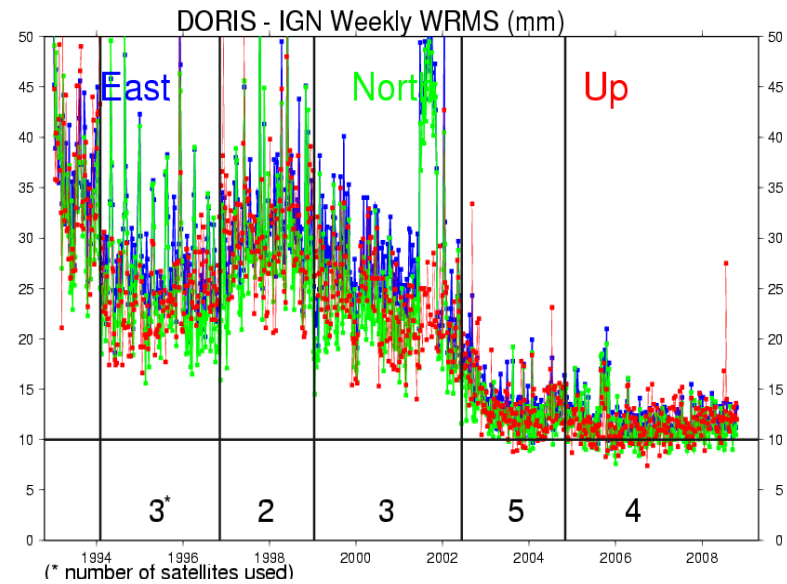
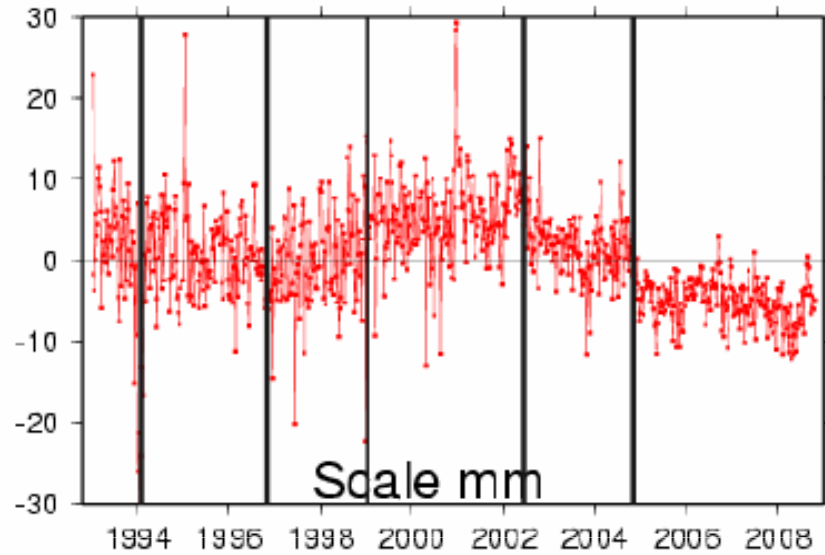
ESA Origin and Scale WRT ITRF2005



IGN Origin and Scale WRT ITRF2005



IDS-1, IGN and ESA WRMS/Scale



Conclusion

- Better performance (WRMS) of the combined IDS series, compared to IGN and ESA solutions
- Scale discontinuities as a function of # of satellites, influenced by ESA solution
- Significant scale difference between IGN and ESA solutions