

IDS and ITRF

IGN

INSTITUT NATIONAL
DE L'INFORMATION
GÉOGRAPHIQUE
ET FORESTIÈRE

Zuheir Altamimi
IGN, France

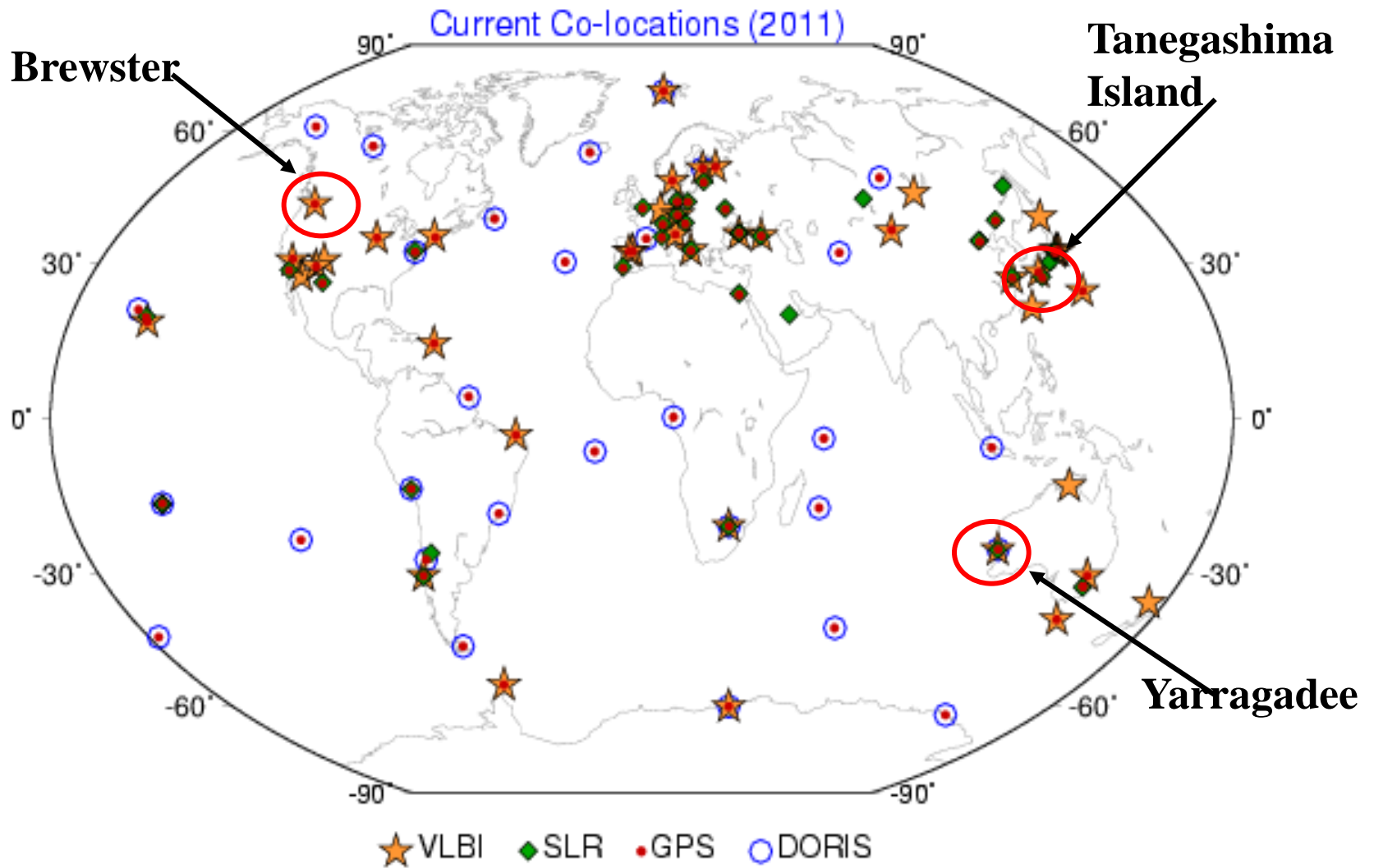


Next ITRF solution (ITRF2013)

- **To be ready in mid 2014:**
 - CfP for ITRF2013 will be issued by Fall 2012
 - Outcome of the ITRS/GGFC call solutions evaluation
 - All techniques to submit solutions by Jan-Feb, 2014, at the latest

- **Expected Improvements & Developments:**
 - Reprocessed solutions;
 - Revisiting the weighting of Local Ties and Space Geodesy solutions included in the ITRF combination;
 - Improving the process of detection of discontinuities in the time series;
 - Modelling the post-seismic station motion;

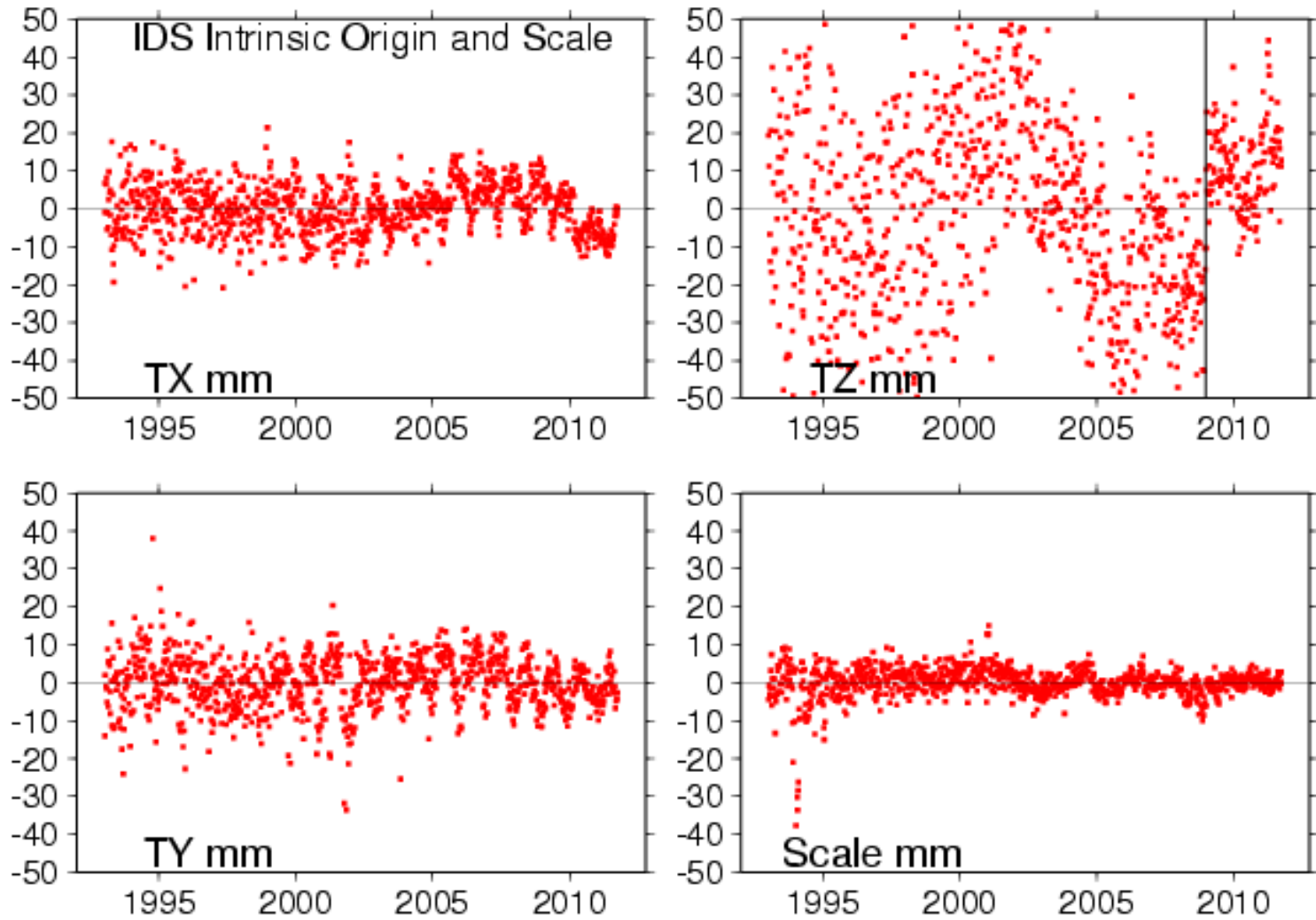
Current Co-locations



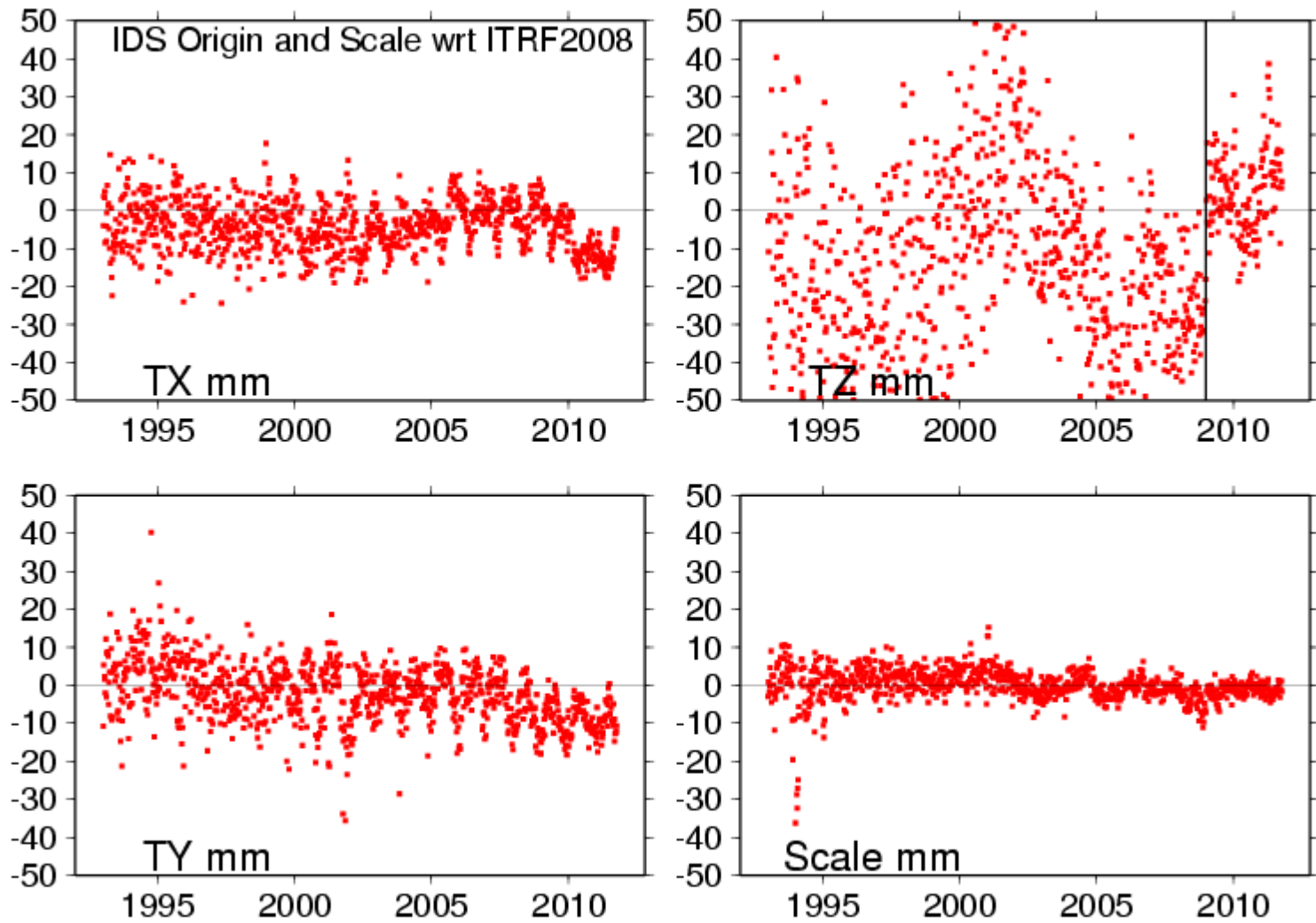
Extended analysis beyond ITRF2008 time-span

- **VLBI: IVS daily SINEX files up to epoch 2012.0 (S. Bachmann)**
- **SLR: ILRSA weekly SINEX up to epoch 2012.1**
- **GPS: Improved IGS combined weekly SINEX up to 2011.3 where mean origin and scale are preserved**
- **DORIS: Extended by weekly solutions up to 2011.7, provided by G. Moreaux**

IDS Intrinsic Origin & Scale

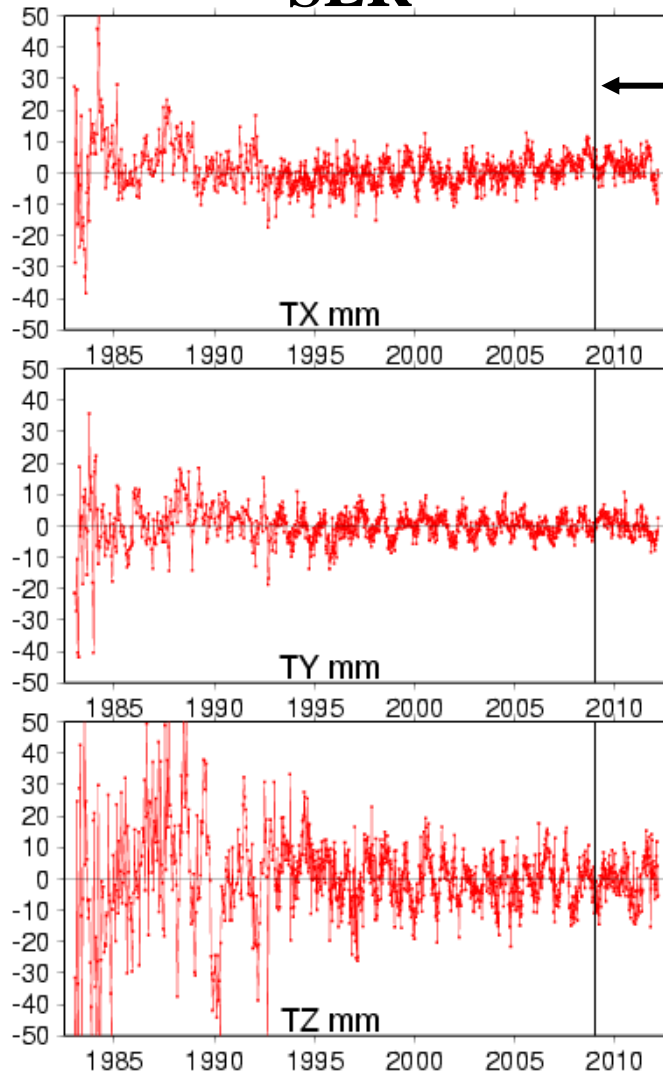


IDS Origin & Scale WRT ITRF2008

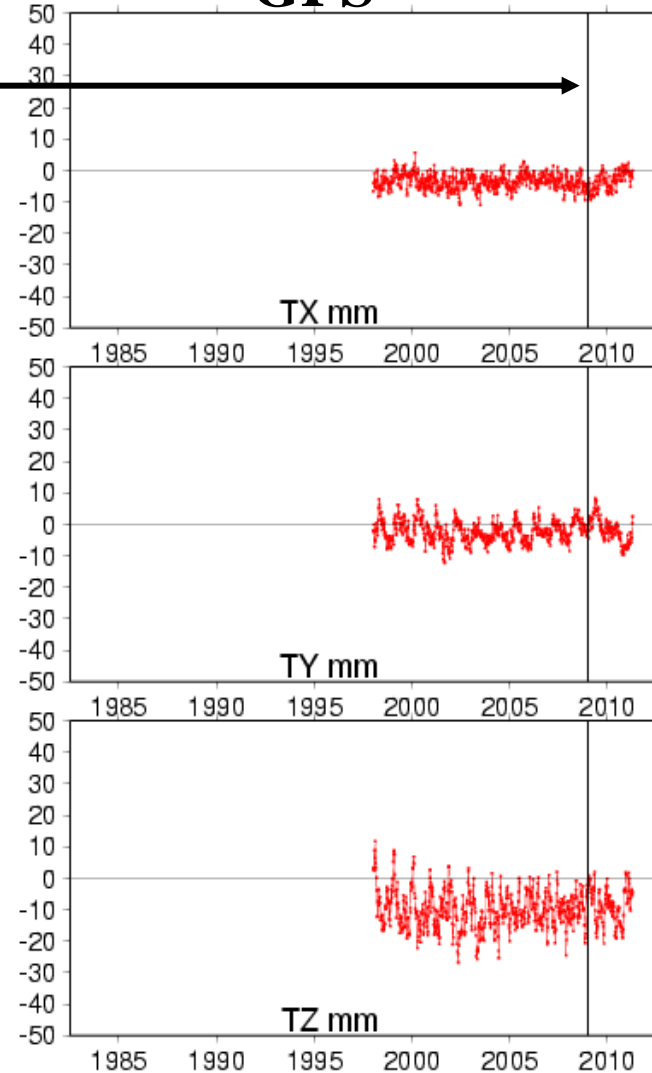


Origin components wrt ITRF2008

SLR



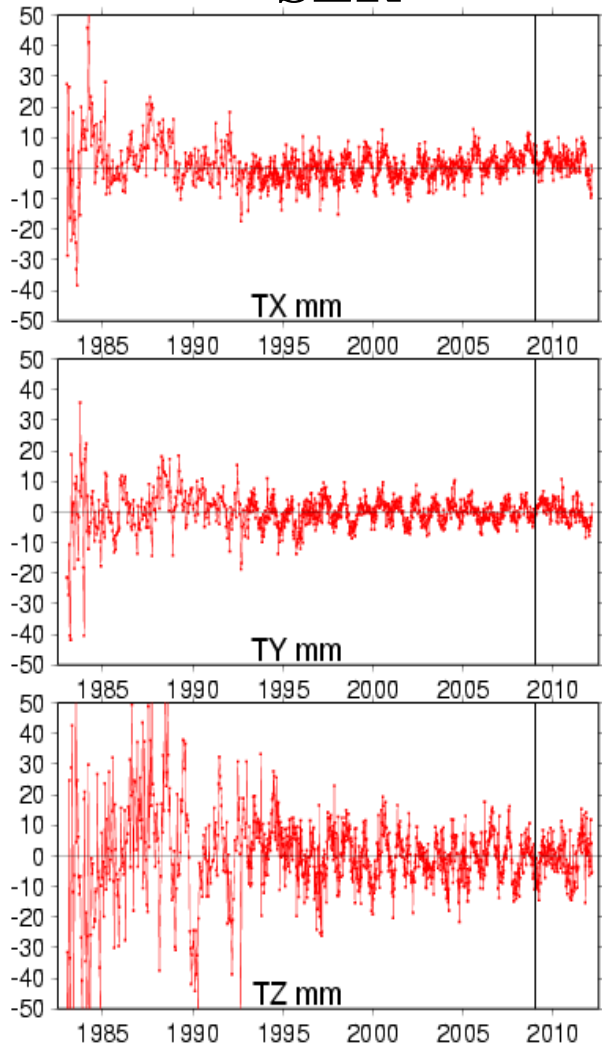
GPS



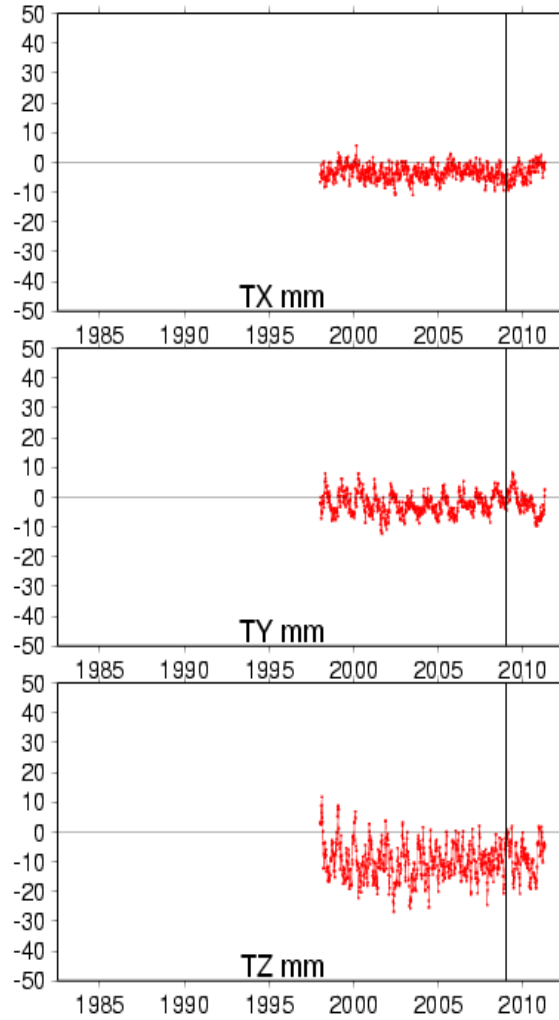
End of ITRF2008 data

Origin components wrt ITRF2008

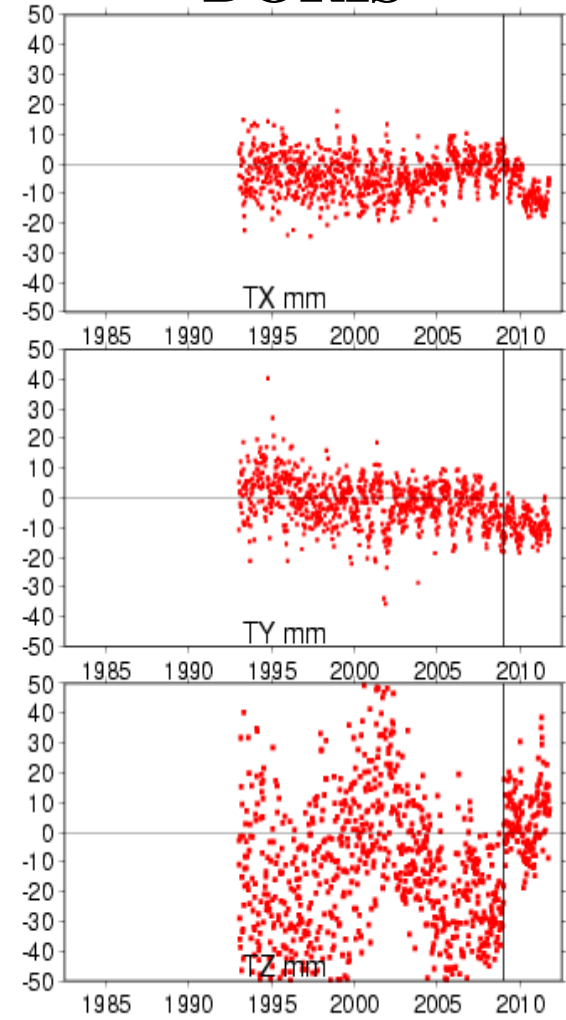
SLR



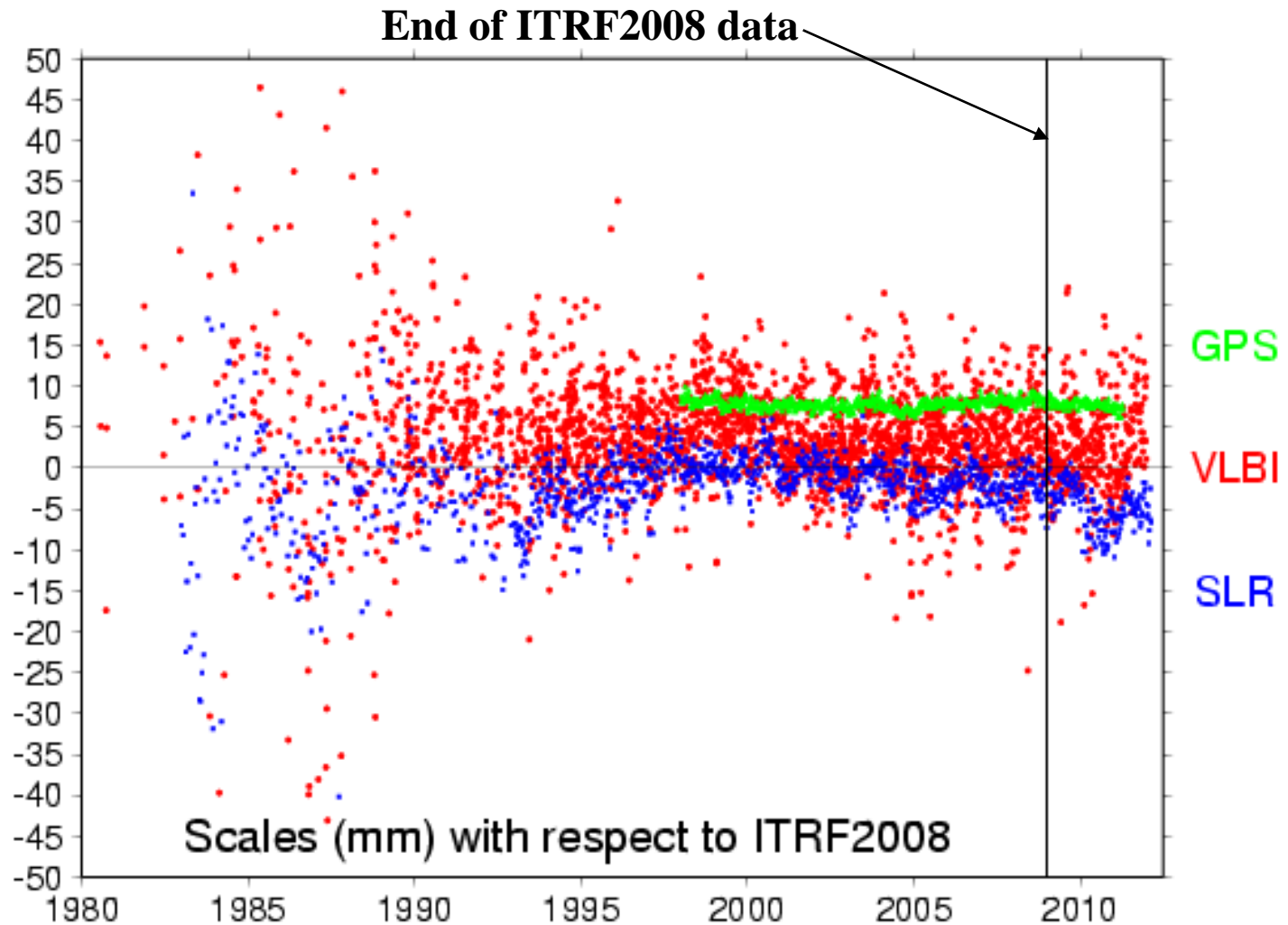
GPS



DORIS



Scale factors wrt ITRF2008



Scale factors wrt ITRF2008

